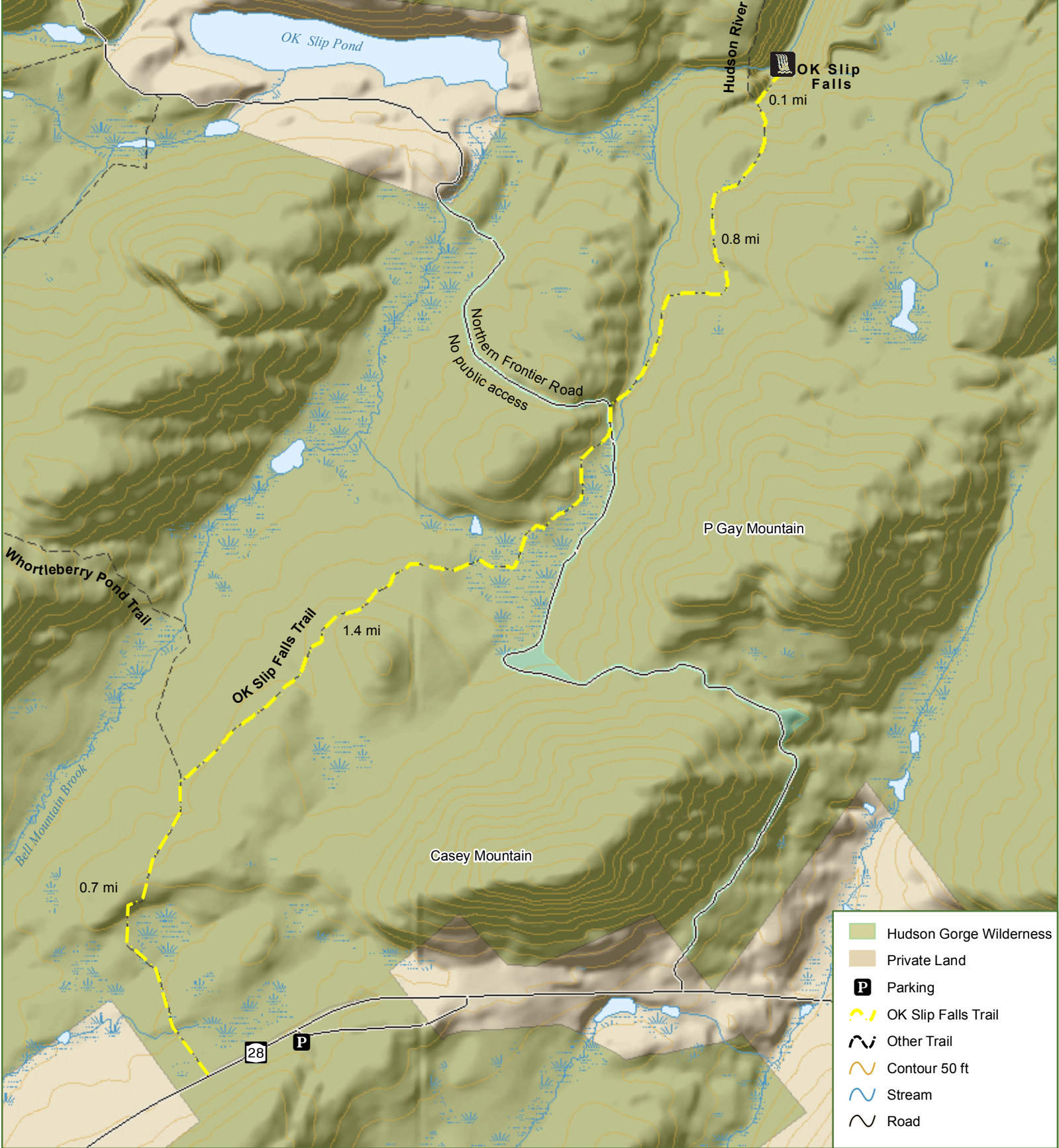


# Hudson Gorge Wilderness - OK Slip Falls Trail

OK Slip Falls Trail leaves the Whortleberry Pond Trail 0.5 miles from the trailhead the two trails share and extends another 2.5 miles to two overlooks of OK Slip Falls; one of the highest waterfalls in the Adirondacks at 250 feet. The Hudson River Access Trail, at 0.75 mi, will take you to the shores of the river, but is a steep and strenuous hike.

Do not trespass on the private inholding - a summer boy's camp. Be cautious of busses and other motor vehicles using the road during the summer - especially on weekends.



	Hudson Gorge Wilderness
	Private Land
	Parking
	OK Slip Falls Trail
	Other Trail
	Contour 50 ft
	Stream
	Road



**Department of Environmental Conservation**

\*\*\*Please respect private property. Stay on designated trails\*\*\*  
 \*\*\*Practice Leave No Trace Principles\*\*\*  
 \*\*\*Emergency contact 518-891-0235\*\*\*

